



Plot No. 23, Main Urban Boulevard, Trafalgar Square, Sector-A,
Bahria Enclave, Islamabad.



GULF ALLIANCE CORPORATE HEAD OFFICE
Suite No. 1, 4th Floor, Mushtaq Mansion, Fazl-e-Haq Road Blue Area, Islamabad.

GULF ALLIANCE BRANCH OFFICE
Plot No. 39, Urban Boulevard near Trafalgar Square, Sector-A, Bahria Enclave, Islamabad.

CONTACT US AT
www.gulfalliance.com | 051-111-11- 4853 | 03008904646 | 03008904747



Convenience at Every Step





OUR STORY

Our journey began with a simple idea - make living more meaningful for our people by providing them an upgraded lifestyle and economic opportunities through high-quality constructed projects. This idea ignited the spark of a construction revolution, becoming the foundation of Gulf Alliance Builders & Developers (GABD) PVT LTD, a company that focuses on enriching each individual's life through this contemporary approach.

Gulf Alliance is proud to claim itself as a national entity, 100% owned by Pakistani nationals and established in 2012. Headquartered in Islamabad, Gulf Alliance is a private company that comprises of a vast team of experienced professionals, trained engineers, managers, supervisors, and labors with diverse portfolios and a knack for success across the real estate sector. Our team has a fine blend of young and experienced professionals deployed to offer benchmark-setting projects to our esteemed clientele, and lead the progress to our vision of a prosperous Pakistan.

GABD's humble beginnings started off as a general works contractor in 2012. With the passage of time, the company embarked on mega projects and has undertaken many challenging assignments. As we progressed accumulating and polishing our skills, we expanded our knowledge and experience in designing, building and constructing. We ensure top-quality solutions and project management services, expanding our business horizons and generating profitable outcomes for all stakeholders. Now, we are more excited than ever to move towards rapid expansion and development.





The falcon's wing signifies ambition and aspiration. It is a symbol for superiority and soaring heights, attributes which are heavily embedded in the brand's identity. The falcon's wing also communicates a crucial aspect of a clear vision.





ABOUT US

When it comes to smart and sustainable living, GABD are masters in this craft. We are a modern construction company with an objective to promote smart and ecological construction projects. Our structures are not only beautiful but are also built on top standard health protocols. We aim to construct technologically advanced infrastructures for an eco-friendly modern living. We encourage communities to come together through the participation of private and public sector entities which enable us to realise our goal; enrich the present to secure the future.

WHAT WE DO?

We provide high quality construction, building, and correlated services that are compliant with safety and health protocols to deliver the best for the occupants along with tailor made packages to suit their construction needs and requirements. Guaranteeing all kinds of security standards, GABD provides specialized services in the field of architecture, construction, property development, interior designing, maintenance, and real estate investment services. In addition to this, we also provide planning and estimation services as per the request of our clients. Our additional services include provision of heavy machinery equipment, tools, raw materials and labor services.

All our constructions have specialized safety and security designs with quick action protocols incorporated into the floor plans. We make sure that all our commercial projects for our clientele are compliant with international standards of safety and security to not only satisfy the needs of the client but also deliver the ultimate sense of peace that one can feel in their space knowing that everything is the best.





VISION

Elevating the communal lifestyle through smart and sustainable projects that can make our nation prosper.

MISSION

To promote safe and hassle-free lifestyle, modernize the architectural practices, and become the trendsetter of contemporary living.

OUR VALUES

Clear - Committed - Considerate

Clear - We have a clear vision, a clear goal that we aim to achieve in every single project with full honesty and transparency.

Committed - Our team is committed to delivering each project with integrity & professionalism, ensuring the highest level of ethical measures. For each aspect of the project, we take full ownership of our tasks & decisions.

Considerate - Our plans are built with thought and care, for those who put faith in our decisions, and those who want to make their dream come true with us. Our client's need is our first priority.



A STATE-OF-THE-ART
COMMERCIAL PROJECT
IN THE HEART OF ISLAMABAD



IRFAN ALAM (FCPA)

Chief Executive Officer

The dreams you set, the aims you have, and the choices you make define who you are. I have always had a vision for harnessing the true potential of contemporary urban architecture via a series of construction projects using modern techniques, cutting-edge tools, and latest technology which uplifts the lives of individuals and communities, collectively.

This vision would not have become a mission without our investors, stakeholders, clients and the tremendous support of our entire workforce, joining hands to collectively work towards our continuous success. Thank you for being a part of this journey.



DR. MAJID SALEEM

Managing Director

Our vision, values and principles guide us every step of the way in developing high-quality projects, even if it is a daunting task. We owe our success to a steely determination, team effort and managerial diligence as well as making quality purchases of high standard construction material, overseeing procurement of quality raw materials and other products.

Our set standard of delivering the best cannot be achieved without the cohesion between our team of investors, stakeholders and workers & engineers.

Our mechanism of constant customer engagement and feedback enables us to develop residential and commercial mega projects of the highest standards for our clients.



MR. WALIULLAH (FCPA)

Executive Director

We are resolute in crafting a new future for the nation, taking residential and commercial mega projects to a new level. With precision, accuracy and dedication, our team is hard at work with our brand values and principles serving as the guiding light.

Constant monitoring and self-critique of each project motivates, propels and enables us to develop quality mega projects and meet the lofty standards we have set for ourselves.

I am proud to be part of such a dynamic company that is seen as the catalyst for change, prosperity and investment opportunities for thousands of individuals in the real estate arena. I credit our esteemed investors, stakeholders, customers and incredibly hardworking staff.



Located in the heart of the serene capital, Gulf Icon II is the perfect destination for ultramodern living with exceptional commercial projects. It entails a 24-hour operational doctor's clinic, luxury brand outlets, exclusive cafes, spacious and exquisite corporate offices, along with opulent penthouses. The modern architecture, exquisite interior design, and utmost attention-to-detail make Gulf Icon II an ideal retail, entertainment, and lifestyle hub. It is a one-of-a-kind project for business establishment and property investment in Pakistan that also promises a high rental return.



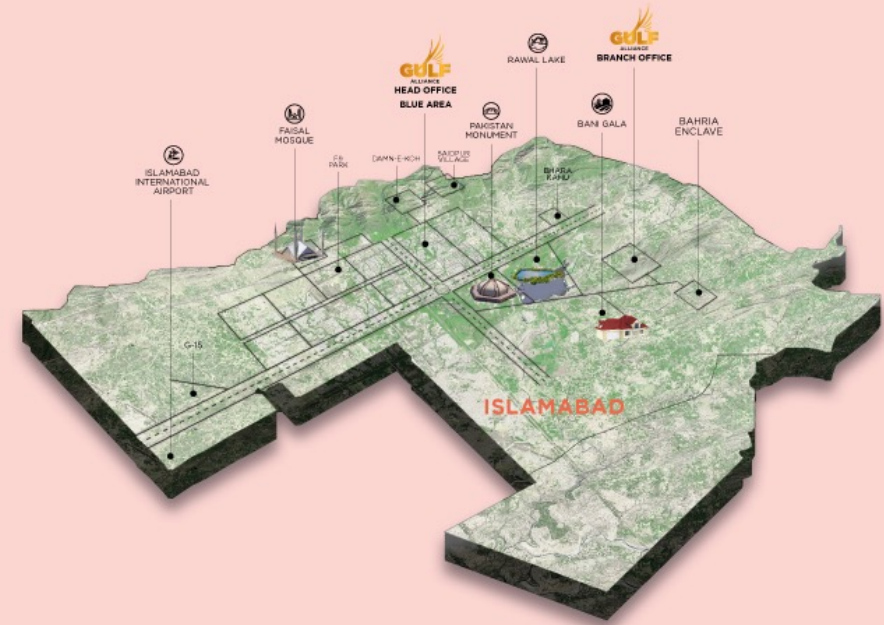
BAHRIA TOWN



YOUR LIFESTYLE DESTINATION

BAHRIA ENCLAVE

is a housing scheme in Islamabad launched by Bahria Town. The society contains 15 main sectors and 3 sub-sectors. It incorporates an exceptional blend of commercial and residential plots. Approved by Capital Development Authority (CDA); it is located at a convenient 15-minute drive from Serena Hotel, Rawal Chowk and Diplomatic Enclave. Bahria Enclave is easily accessible from Srinagar Highway, Lethrar Road and Islamabad Highway. Landscaped with green belts and footpaths, provision of underground electricity, round the clock security, gas and other modern amenities make Bahria Enclave the ultimate lifestyle destination. A wide array of attractions are present within the society, including one of its kind Bird Aviary, Zoo, Restaurants and Parks.



ISLAMABAD

The Prestigious Location

A planned city with well-developed roads, and scenic backdrops which captivate the heart. Known for its high standard of living, safety and abundant greenery, the capital city is globally recognized for its iconic landmarks, beautiful infrastructure, and modern architecture. Life in Islamabad is like dwelling close to nature, yet not too far off from the cosmopolitan city.



FAISAL MOSQUE

The magnificent and elegant architecture of this mosque makes it a major attraction for visitors. This majestic white mosque is the fifth largest mosque in the world.



MARGALLA HILLS

The beautiful and lush Margalla Hills is one of the many reasons the capital city stands out, especially to nature enthusiasts and explorers. These hills are known for its hiking trails, and tourist spots like Daman-e-Koh and Pir Sohawa.



LOK VIRSA MUSEUM

Located in the Shakarparian Hills, this museum showcases the rich history and diverse cultures of Pakistan.

BANKS & ATM

To help carry out your financial transactions smoothly and swiftly

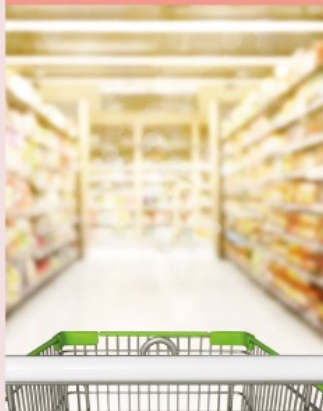


COMMERCIAL & RETAIL OUTLETS

Premium spaces available for commercial & retail outlets with state-of-the-art amenities

GROCERY MART

A convenience store offering a wide array of consumable everyday items for all your needs



COFFEE SHOPS & FAST FOOD CHAINS

Several world-renowned coffee shops and quick-service dining options available



SPACIOUS CORPORATE OFFICES

Equipped with modern amenities, contemporary and spacious office spaces for your business needs

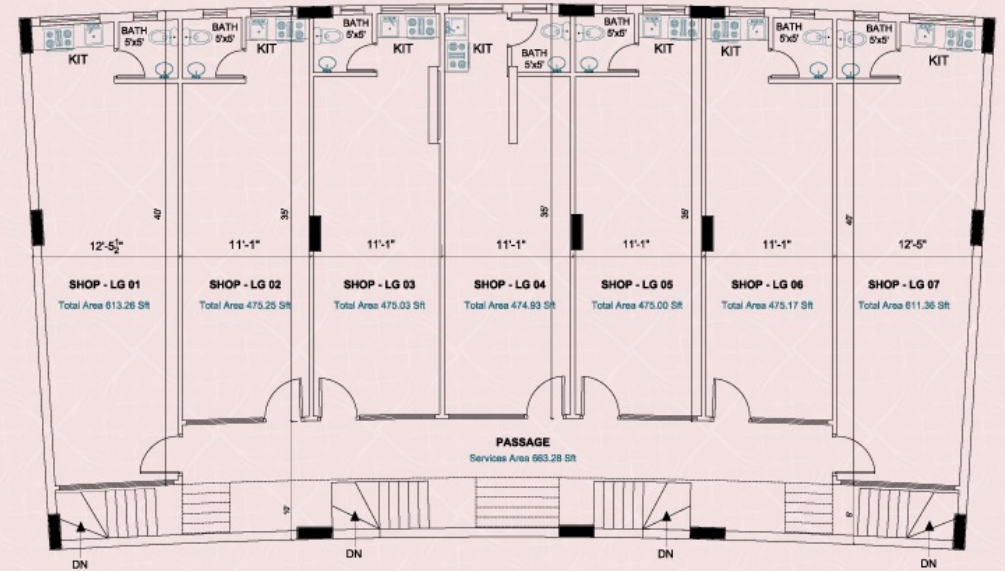
PENTHOUSES

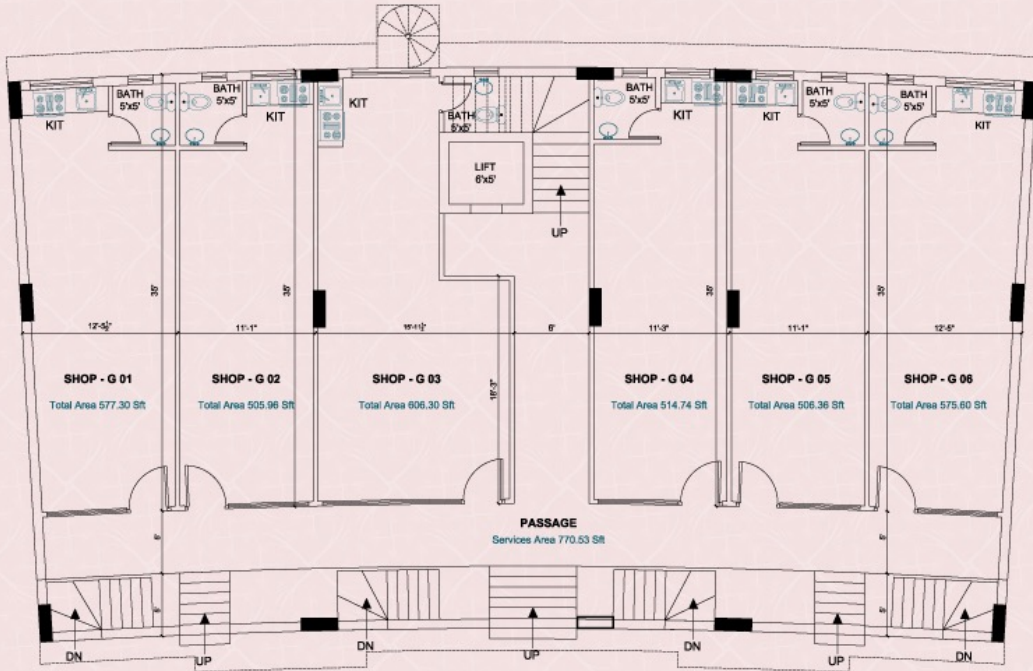
Luxurious penthouses that are a symbol of prestige will elevate your living standards



LOWER GROUND FLOOR

RETAIL SPACES IDEAL FOR
GROCERY MART



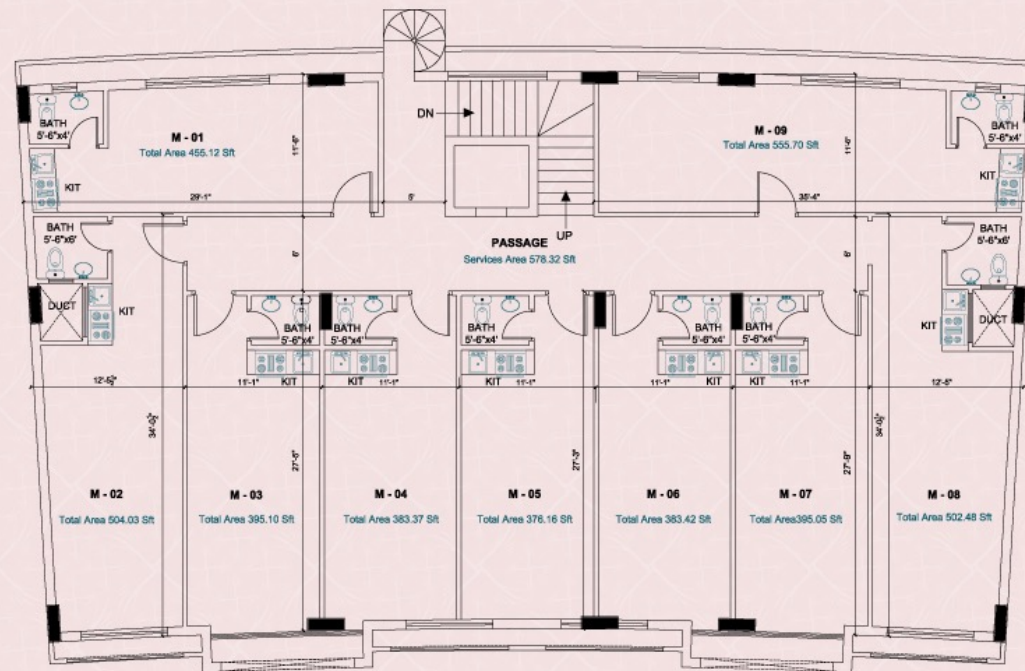


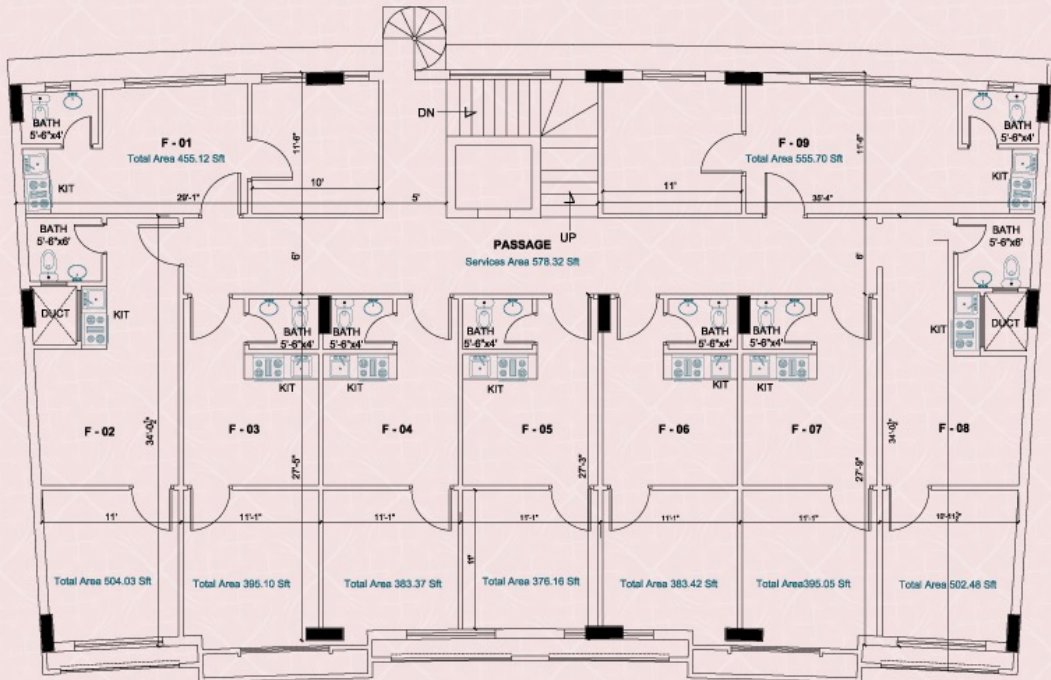
GROUND FLOOR

RETAIL SPACES IDEAL FOR BANKS & ATMS

MEZZANINE FLOOR

RETAIL SPACES IDEAL FOR COMMERCIAL OUTLETS



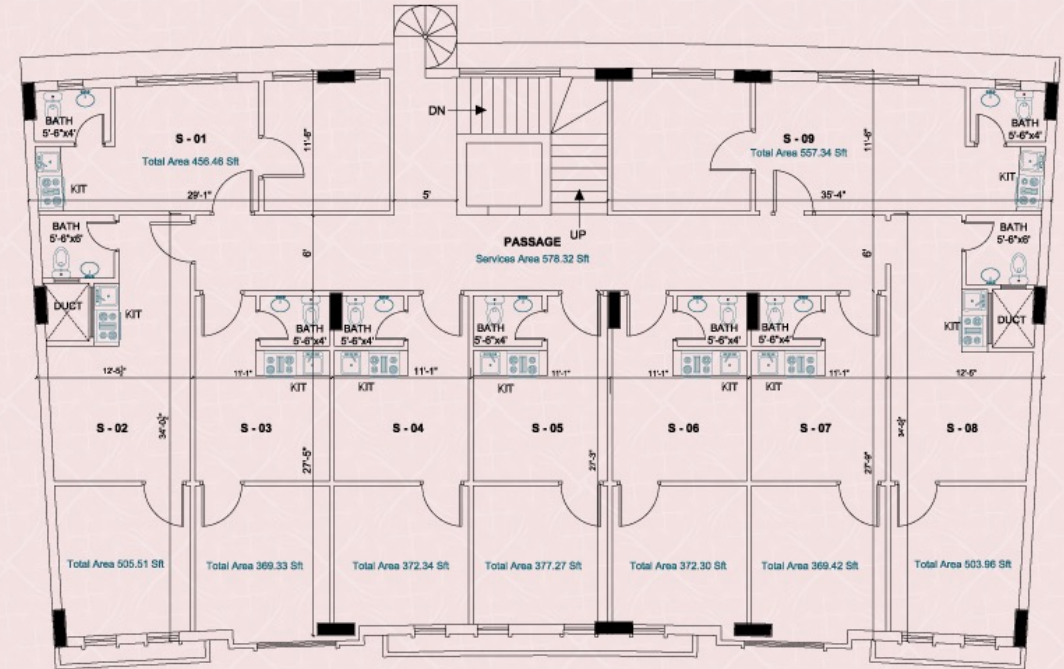


FIRST FLOOR

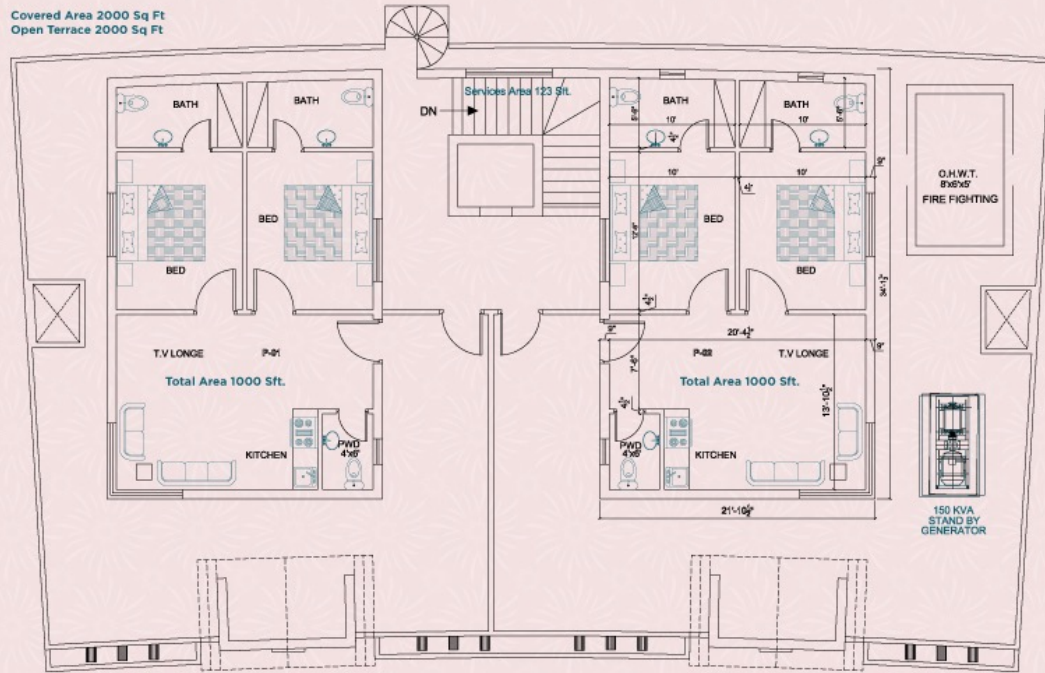
RETAIL SPACES IDEAL FOR COFFEE SHOPS & FAST FOOD CHAINS

SECOND FLOOR

RETAIL SPACES IDEAL FOR SPACIOUS CORPORATE OFFICES



Covered Area 2000 Sq Ft
Open Terrace 2000 Sq Ft



**ROOFTOP
PENTHOUSE**
MODERN & LUXURIOUS
PENTHOUSES



AN ICONIC RETAIL, ENTERTAINMENT & LIFESTYLE DESTINATION

FEATURES & AMENITIES

-  Speedy Elevators
-  Grand Masjid
-  Spacious Car Parking
-  24-Hour Surveillance
-  Gym Facility
-  Parks
-  High-end Shopping Brands
-  CineGold Plex
-  Spacious Shops
-  Renowned Food Chains
-  Hospital
-  University



ACACIA MALL & RESIDENCY



GULF TRADE CENTER



GULF ARCADE



GULF HOMES



GULF MANSION



GULF ICON-II



WIDE ZONE SQUARE



GULF HEIGHTS



PEARL VISTA CLASSIC



RIVER ICON